

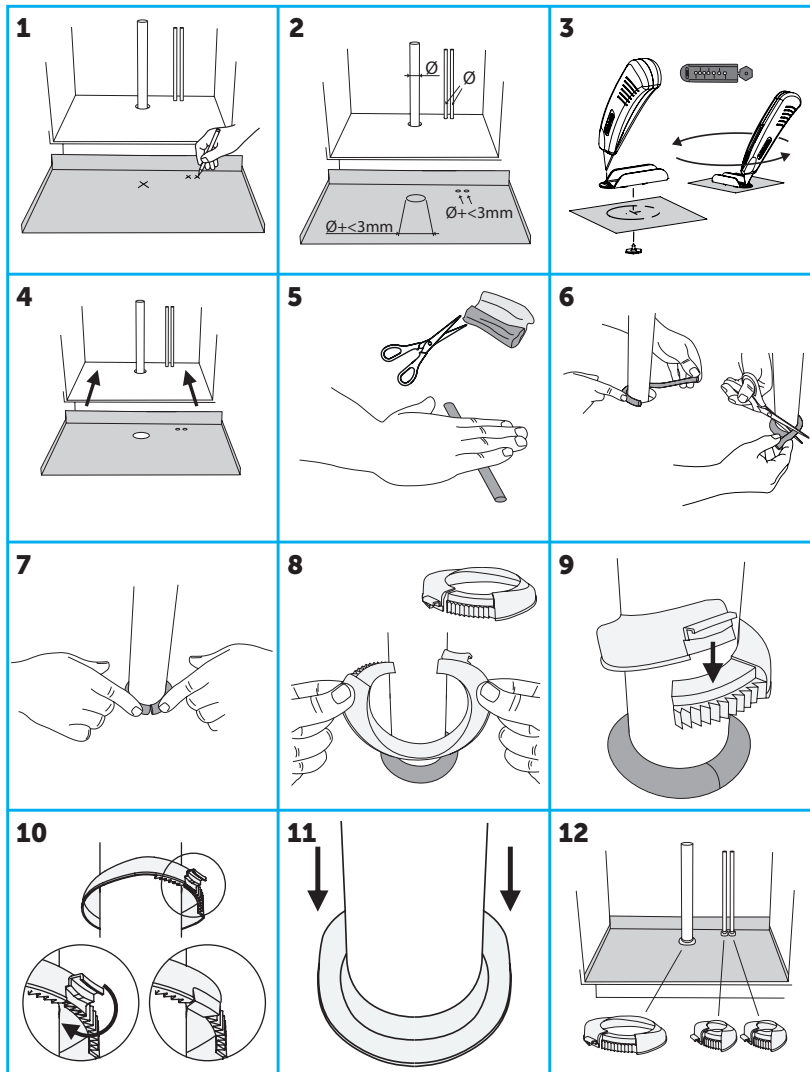
# Assembly Instructions Tollco Sealing range

## Seal set with pipe collar

### ASSEMBLY INSTRUCTIONS BUSHING FOR DISHWASHER HOSES

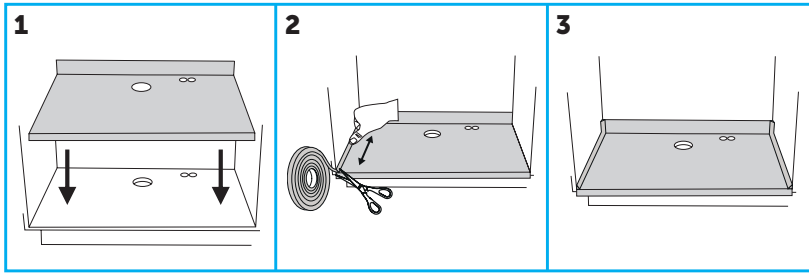
<p><b>1</b> (mm)</p>	<p><b>2</b></p>	<p><b>3</b></p>	<p><b>1.</b> Hole punching, use hole saw Ø86 mm. Place the hole at least 25 mm from the back, side wall and pipe.</p> <p><b>2.</b> Press the lug, remove the hose holder.</p> <p><b>3.</b> a) Water-connected machine, b) Power cord, c) Solenoid valve, d) Drain hose.</p>
<p><b>4</b></p>	<p><b>5</b></p>	<p><b>6</b></p>	<p><b>4.</b> e) Correct position of the solenoid valve, the valve must be outside the frame. Push the nut through the rubber membrane. f) Press the solenoid valve inside the frame and up through the rubber membrane. g) Ready.</p> <p><b>5.</b> Fold the power cord, insert the power cord through the hole.</p> <p><b>6.</b> Then push the power cord and power plug through.</p>
<p><b>7</b></p>	<p><b>8</b></p>	<p><b>9</b></p>	<p><b>7.</b> Push the drain hose through the rubber membrane.</p> <p><b>8.</b> Insert the hose holder, press the hoses and cord into the holder.</p> <p><b>9.</b> No other water-connected machine. Place the seal on the holder.</p>
<p><b>10</b></p>	<p><b>11</b></p>	<p><b>12</b></p>	<p><b>10.</b> Press the "Click x 4" bushing with hose holder together. Groove (female) against the locking (male).</p> <p><b>11.</b> Press the Diaflex into the hole.</p> <p><b>12.</b> Screw on (4 screws) until rubber swells 2 mm outside the frame.</p>
<p><b>13</b></p>	<p><b>14</b></p>	<p><b>13.</b> Seal hose and cable. Remove the protective film on the tape. Attach hose seal to rubber and hose. Tape around the hose.</p> <p><b>14.</b> Press the hose seal against the rubber.</p>	<p><b>13.</b> Seal hose and cable. Remove the protective film on the tape. Attach hose seal to rubber and hose. Tape around the hose.</p> <p><b>14.</b> Press the hose seal against the rubber.</p>

## INSTALLATION SLEEVE COUPLINGS WITH SEAL



1. Mark out where the holes will be on the cabinet insert.
2. Measure the diameter of the pipes and add a maximum of 3 mm.
3. Holes for the pipe penetrations. Unscrew the spike from the hole punching tool. Place the tip of the lug against the centre mark on the underside of the cabinet insert. Press down on the cabinet insert until the spike penetrates through the plastic. Select the hole size (according to step 2) and place the hole punching tool over the spike. Place a utility knife in the gap on the hole tool and cut out a round hole.
4. Place the cabinet insert in place in the cabinet.
5. Cut off a piece of the sealant and roll it as shown in the figure.
6. Place the seal around the pipe and against the bottom panel of the cabinet. Cut off and remove the excess sealant.
7. Press firmly on the seal so the pipe bushing is waterproof.
8. Choose the right size of sleeve coupling (Diameter measurement is on the sleeve coupling). Insert the pipe through the slot of the sleeve coupling.
9. Turn the slot opening of the sleeve coupling towards you. Press the sleeve coupling together as shown in the figure. Lower the top part of the sleeve coupling over the lower part so that it locks in place.
10. Fold the locking loop down until it clicks.
11. Turn the slot of the sleeve coupling towards the back wall of the cabinet and lower the sleeve coupling towards the cabinet insert.
12. The sleeve couplings are used for both drain pipes and water pipes.

## INSTALLATION TOLLCO SEALING STRIP



If the cabinet insert does not have side frames, follow the instructions below.

1. Place Tollco Cabinet Insert in the sink cabinet.
2. Mount the sealing strip against both side walls of the cabinet and cut off.
3. When mounting in a corner cabinet, also mount the sealing strip on the inside of the front wall.

**Note!** Press the sealing strip so that it is watertight

SCAN CODE FOR MORE INFO  
ABOUT THE PRODUCT.



Product	RSK	Item no.	Bushing for dishwasher hoses	Sleeve couplings	Seals
Sealing range Seal set with pipe collar	383 92 89	5902010-04-001	x	x	x

### TOLLCO AB

Rubanksgatan 4, 741 71 Knivsta, Sweden  
Tel +46 18 34 90 10. [info@tollco.se](mailto:info@tollco.se) [tollco.se](http://tollco.se)

**TOLLCO**  
Your protection against water damage

20211122