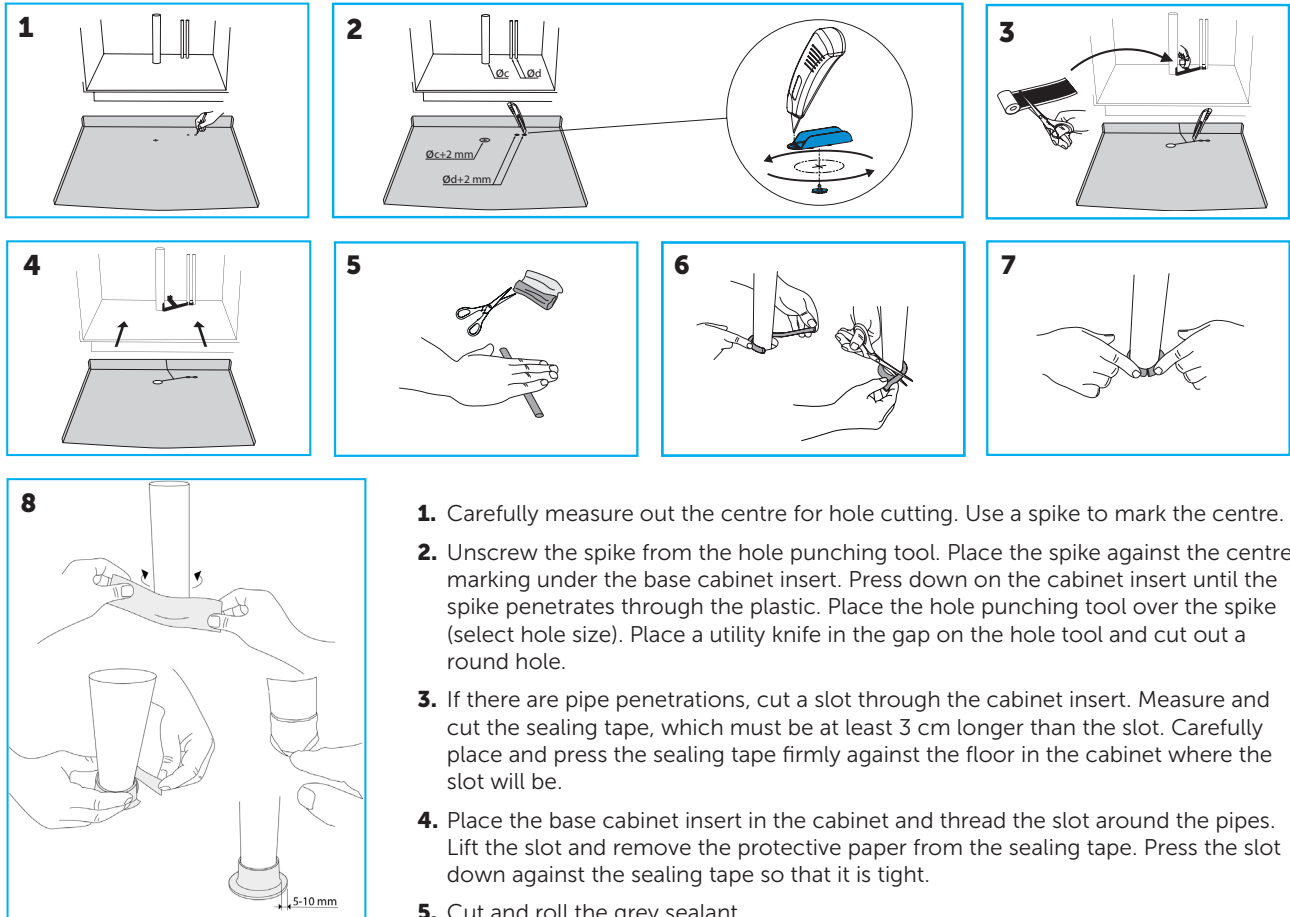


Assembly Instructions Tollco Sealing range

Sealing tape set

ASSEMBLY



1. Carefully measure out the centre for hole cutting. Use a spike to mark the centre.
2. Unscrew the spike from the hole punching tool. Place the spike against the centre marking under the base cabinet insert. Press down on the cabinet insert until the spike penetrates through the plastic. Place the hole punching tool over the spike (select hole size). Place a utility knife in the gap on the hole tool and cut out a round hole.
3. If there are pipe penetrations, cut a slot through the cabinet insert. Measure and cut the sealing tape, which must be at least 3 cm longer than the slot. Carefully place and press the sealing tape firmly against the floor in the cabinet where the slot will be.
4. Place the base cabinet insert in the cabinet and thread the slot around the pipes. Lift the slot and remove the protective paper from the sealing tape. Press the slot down against the sealing tape so that it is tight.
5. Cut and roll the grey sealant.
6. Place the seal around the pipes and cut off.
7. Press the joints of the seal together. Press the seal against the pipe and floor to ensure a seal.
8. Measure and cut the white sealing tape so that it is 2 cm longer than the diameter of the pipe. Attach the sealing tape to the floor and pipe and then around the pipe.
Note! Do not stretch the tape. Press the sealing tape firmly against the pipe and floor until it is tight.

SCAN CODE FOR MORE INFO
ABOUT THE PRODUCT.



Product	RSK	Item no.	Dimensions
Tollco Sealing range Sealing tape set	3829933	590030	0,7 m, 0,5 m, 40 g

TOLLCO AB
Rubanksgatan 4, 741 71 Knivsta, Sweden
Tel +46 18 34 90 10. info@tollco.se tollco.se

TOLLCO
Your protection against water damage

20211013