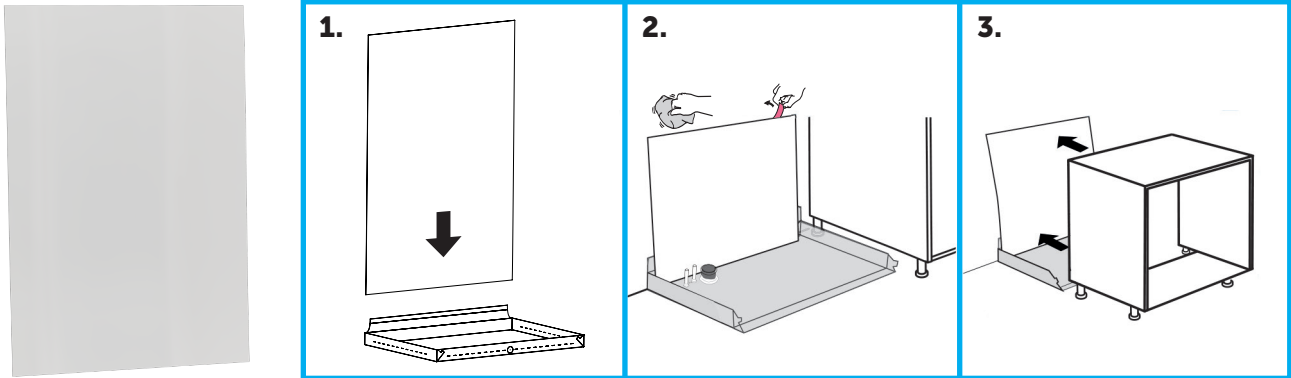


Assembly Instruction Floortray kitchen Wallboard



ASSEMBLY

1. Mark out the position of the floor protector or appliance mat and place the Tollco Wall Panel in the protector or mat.
2. Wipe the wall clean and dry and remove the protective film from the wall panel sitting on the tape and press the double-sided tape until it is firmly attached to the wall.
3. Lift the cabinet or machine into place on the floor protector.

SCAN CODE FOR MORE INFO ABOUT THE PRODUCT.



Product	RSK	Item no.	Dimensions mm (WXH)
Tollco Floortray kitchen Wallboard 40 cm, V40	8080803	3006001-02-001	394x875 mm
Tollco Floortray kitchen Wallboard 45 cm, V45	8080804	3006002-02-001	444x875 mm
Tollco Floortray kitchen Wallboard 60 cm, V60	8080805	3006003-02-001	594x875 mm
Tollco Floortray kitchen Wallboard 80 cm, V80	8080807	3006004-02-001	794x875 mm
Tollco Floortray kitchen Wallboard 90 cm, V90	8080808	3006005-02-001	894x875 mm



Tgnr 0505/01

TOLLCO AB
 Rubanksgatan 4, 741 71 Knivsta, Sweden
 Tel +46 18 34 9010. info@tollco.se **tollco.se**



Accepterad
 monteringsanvisning
 2021-1

TOLLCO
 Your protection against water damage

20211015