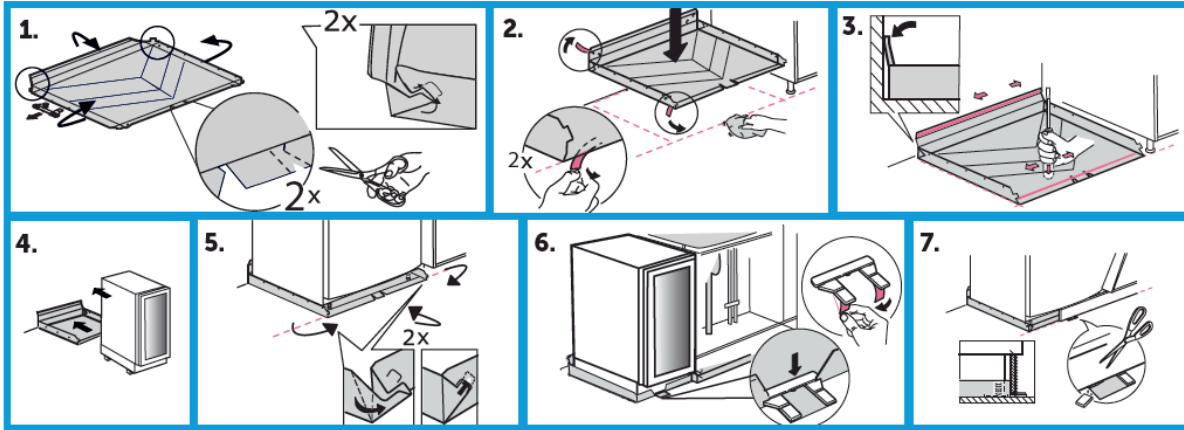


Assembly Instructions Whitegoods underlay Wine Cooler Standard



1. Fold up the back and side edges. Cut according to the markings. Fold the corner flaps in and lock into the grooves on the edges. Mark out the location of the wine cooler mat in relation to the cabinet.
2. Wipe the floor dry and clean. Remove the protective liner (2 pcs) that sits on the double-sided adhesive tape.
3. Press the double-sided tape firmly against the floor and the wall. Use the back of a screwdriver or something similar.
4. Lift the cabinet or machine into place.
5. Fold up the front edge of the floor protector and fold in and lock the corner flaps in the groove on the edge.

Only do parts 6 and 7 if the system will be open. For a closed system, skip parts 6 and 7.

6. Remove the protective liner on the double-sided adhesive tape (2 pcs) that sits on the outlet. Press the outlet down, ensuring that the edge is firmly in the groove on the outlet.
7. Cut off the excess part of the outlet relative to the kitchen plinth.

SCAN CODE FOR MORE INFO
ABOUT THE PRODUCT.



Product	RSK	Item no.	Dimensions (mm)
Tollco Whitegoods underlay Wine Cooler Standard 15 cm	8080867	3008002-01-020	146x465x40
Tollco Whitegoods underlay Wine Cooler Standard 30 cm	8080868	3008004-01-020	296x465x40
Tollco Whitegoods underlay Wine Cooler Standard 40 cm	8080869	3008006-01-020	396x465x40
Tollco Whitegoods underlay Wine Cooler Standard 50 cm	8080972	3008008-01-020	496x465x40
Tollco Whitegoods underlay Wine Cooler Standard 60 cm	8080973	3008010-01-020	596x465x40



Tgnr 0505/01

TOLLCO AB
Rubanksgatan 4, 741 71 Knivsta, Sweden
Tel +46 18 34 90 10. info@tollco.se tollco.se

TOLLCO
Your protection against water damage

20211015