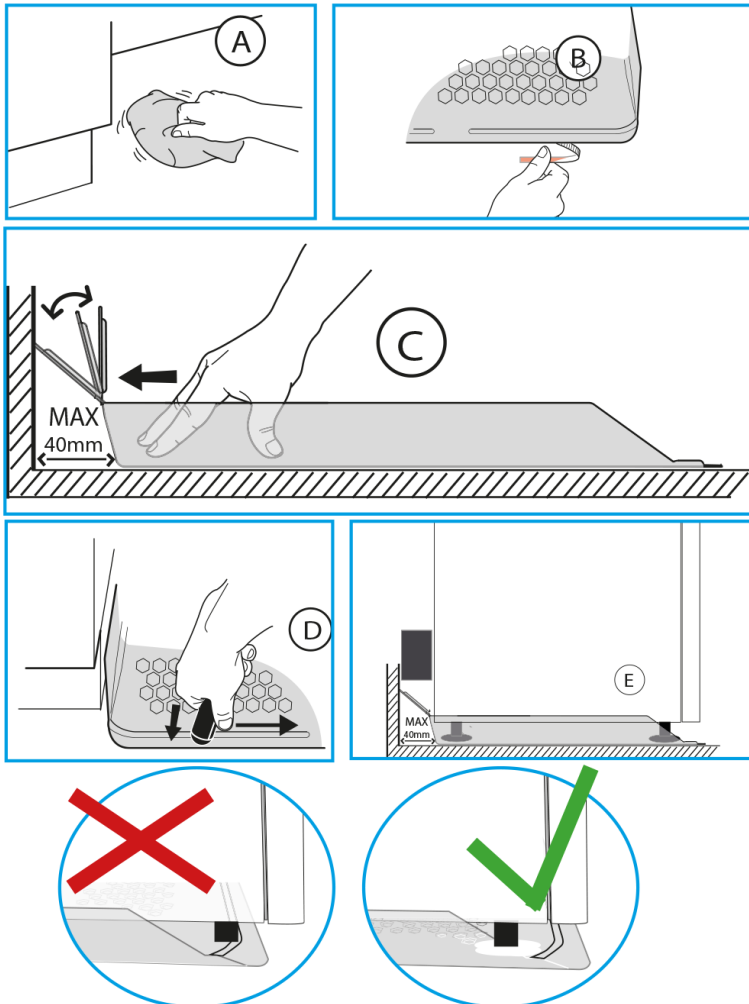


Assembly Instructions Whitegoods underlay Fridge/Freezer Pro



ASSEMBLY

- A.** Important, wipe clean and dry.
- B.** Remove the protective film from the tape.
- C.** Position of the mat.
 1. Without spacers: Slide the mat against the wall as far as possible.
 2. With spacers: Move forward and adjust the distance max 40 mm from the wall.
- D.** For the tape to have maximum adhesion, press on top of the front edge with a hard object along the entire front edge.
- E.** Proper installation with spacers.

NOTE! Make sure the foot is inside the water barrier of the mat. Extra-deep refrigerator/freezer mats are available in our standard series.

SCAN CODE FOR MORE INFO ABOUT THE PRODUCT.



Tgnr 0505/01

Product	RSK	Item no.	Dimensions mm
Tollco Whitegoods underlay Fridge/Freezer Pro 60 cm	8039002	516058	600x585x40

TOLLCO AB
Rubanksgatan 4, 741 71 Knivsta, Sweden
Tel +46 18 34 90 10. info@tollco.se tollco.se

TOLLCO
Your protection against water damage

20211015