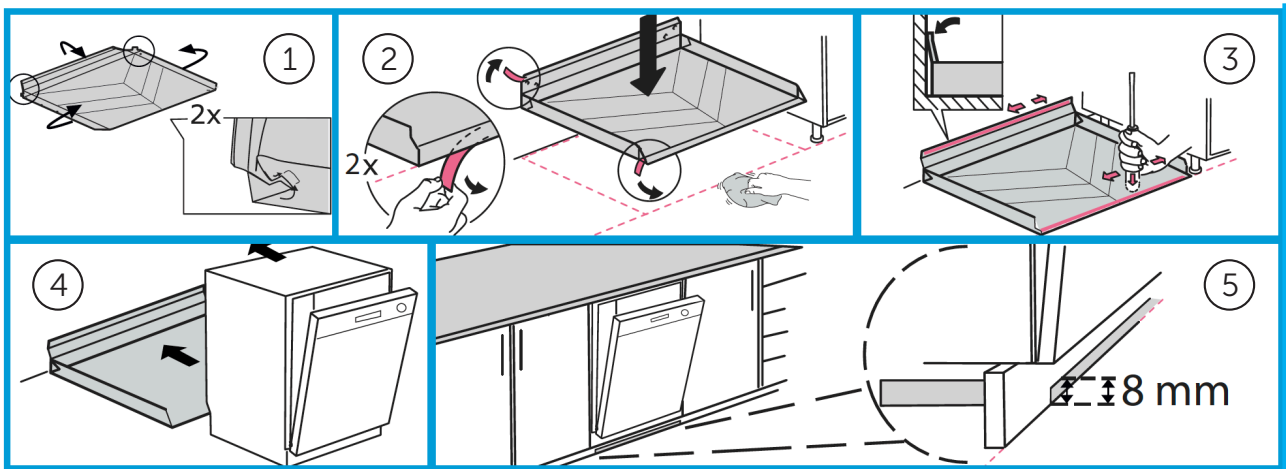


Assembly Instructions Whitegoods underlay Dishwasher Standard



ASSEMBLY

1. Fold up the side edges and back edge of the mat. Fold the corner flap into the hole.
2. Important, wipe clean and dry. Remove the protective film from the tape. Place the front edge of the mat in line with the front edge of the base.
3. For the tape to have maximum adhesion, press on top of the front edge and back edge with a hard object along the entire front and back edge.
4. Slide the dishwasher on top of the mat.
5. Make recesses in the base so that water leakage can be detected.

SCAN CODE FOR MORE INFO
ABOUT THE PRODUCT.



Tgnr 0505/01

Product	RSK	Item no.	Dimensions (mm)
Tollco Whitegoods underlay Dishwasher Standard 45 cm	8039037	3001002-01-015	450x500x40
Tollco Whitegoods underlay Dishwasher Standard 60 cm	8039038	3001004-01-020	600x500x40

TOLLCO AB

Rubanksgatan 4, 741 71 Knivsta, Sweden
Tel +46 18 34 9010. info@tollco.se tollco.se

TOLLCO
Your protection against water damage

20211015