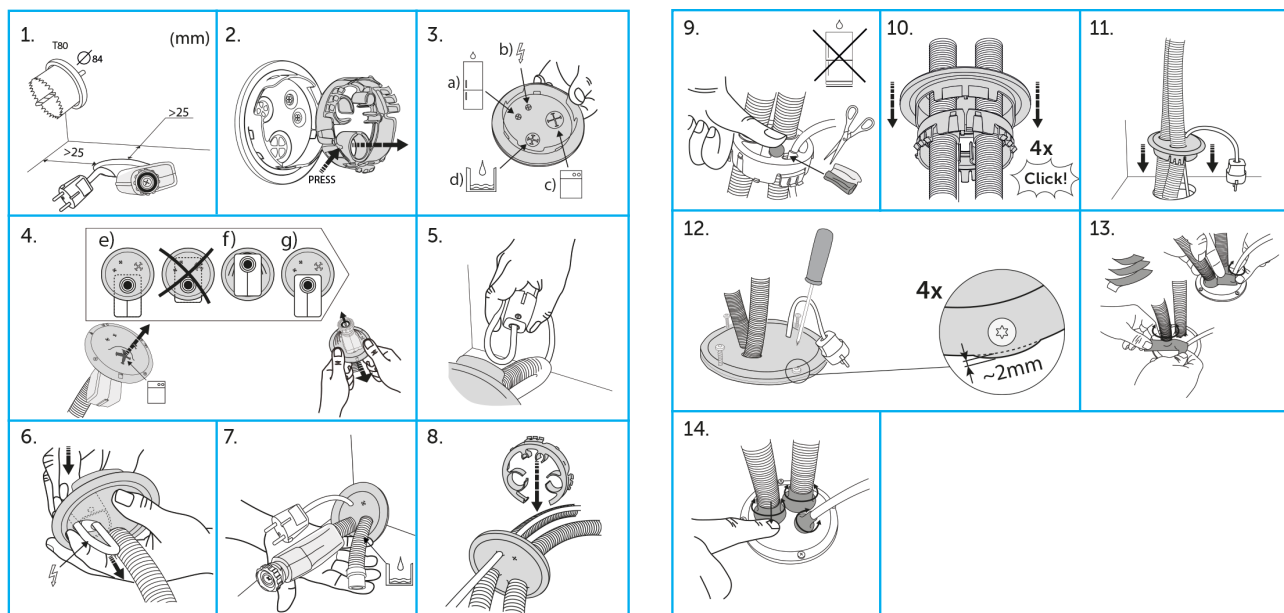


Assembly Instructions Tollco Sealing range Dishwasher bushing seal



ASSEMBLY INSTRUCTIONS DIAFLEX

1. Hole punching, use hole saw T80 = Ø84 mm. Place the hole at least 25 mm from the back, side wall and pipe.
2. Press the lug, remove the hose holder.
3. a) Water-connected machine, b) Power cord, c) Solenoid valve, d) Drain hose.
4. e) Correct position of the solenoid valve, the valve must be outside the frame. Push the nut through the rubber membrane.
f) Press the solenoid valve inside the frame and up through the rubber membrane.
g) Ready.
5. Fold the power cord, insert the power cord through the hole.
6. Then push the power cord and power plug through.
7. Push the drain hose through the rubber membrane.
8. Insert the hose holder, press the hoses and cord into the holder.
9. No other water-connected machine. Place the seal on the holder.
10. Press the "Click x 4" bushing with hose holder together. Groove (female) against the locking (male).
11. Press the Diaflex into the hole.
12. Screw on (4 screws) until rubber swells 2 mm outside the frame.
13. Seal hose and cable. Remove the protective film on the tape. Attach hose seal to rubber and hose. Tape around the hose.
14. Press the hose seal against the rubber.

SCAN CODE FOR MORE INFO
ABOUT THE PRODUCT.



Product
Tollco Sealing range Dishwasher bushing seal

RSK
8039030

Item no.
590042

TOLLCO AB
Rubanksgatan 4, 741 71 Knivsta, Sweden
Tel +46 18 34 90 10. info@tollco.se tollco.se



Accepterad
monteringsanvisning
2021-1

TOLLCO
Your protection against water damage

20211013