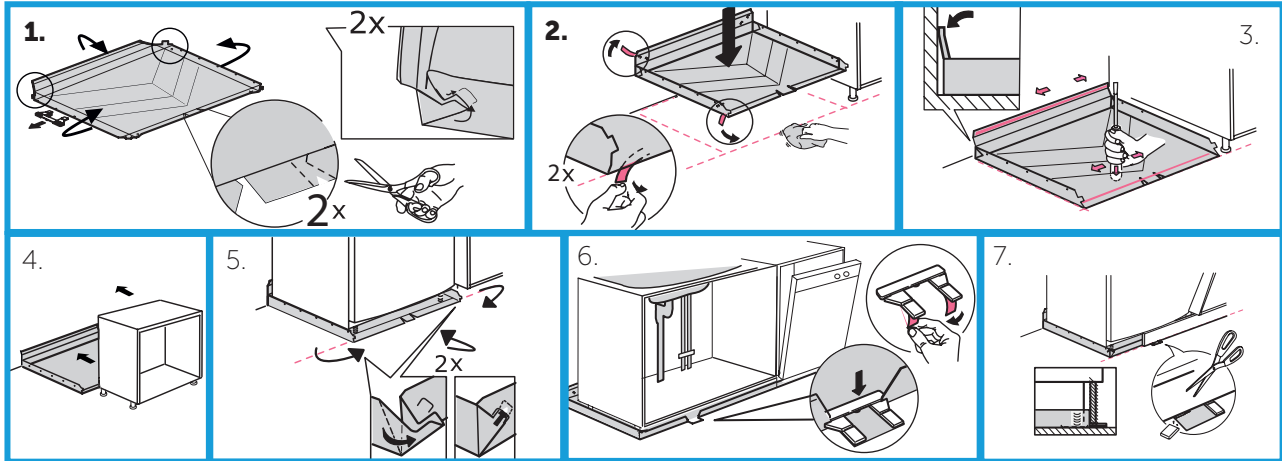


# Assembly Instructions Floortray kitchen Dishwasher and laundrymachines

## ASSEMBLY



1. Fold up the back and side edges. Cut according to the markings. Fold the corner flaps in and lock into the grooves on the edges. Mark out the location of the floor protector in relation to the cabinet.
2. Wipe the floor dry and clean. Remove the protective liner (2 pcs) that sits on the double-sided adhesive tape.
3. Press the double-sided tape firmly against the floor and the wall. Use the back of a screwdriver or something similar.
4. Lift the cabinet or machine into place.
5. Fold up the front edge of the floor protector and fold in and lock the corner flaps in the groove on the edge.

Only do parts 6 and 7 if the system will be open. For a closed system, skip parts 6 and 7.

6. Remove the protective liner on the double-sided adhesive tape (2 pcs) that sits on the outlet. Press the outlet down, ensuring that the edge is firmly in the groove on the outlet.
7. Cut off the excess part of the outlet relative to the kitchen plinth.



Tgnr 0505/01

SCAN CODE FOR MORE INFO ABOUT THE PRODUCT.



Produkt	RSK	Item no.	Dimensions mm (WxDxH)
Floortray kitchen Dishwasher/laundrymachines 45x50 cm	8080775	3002016-01-015	446x495x40
Floortray kitchen Dishwasher/laundrymachines 60x50 cm	8039039	3002002-01-020	596x495x40
Floortray kitchen Dishwasher/laundrymachines 60x54 cm	8080898	3002002-01-020-1	596x535x40
Floortray kitchen Dishwasher/laundrymachines 79x50 cm	8039040	3002004-01-015	790x495x40
Floortray kitchen Dishwasher/laundrymachines 89x50 cm	8039041	3002006-01-015	890x495x40
Floortray kitchen Dishwasher/laundrymachines 119x50 cm	8039042	3002008-01-015	1190x495x40
Floortray kitchen Dishwasher/laundrymachines 119x54 cm	8080899	3002014-01-015	1190x535x40

## TOLLCO AB

Rubanksgatan 4, 741 71 Knivsta, Sweden  
Tel +46 18 34 90 10. [info@tollco.se](mailto:info@tollco.se) [tollco.se](http://tollco.se)

**TOLLCO**  
Your protection against water damage

20211015